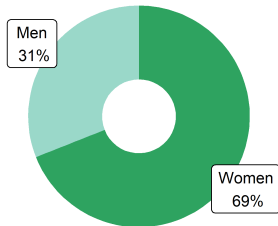
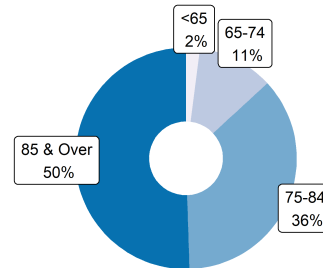


ASSISTED LIVING RESIDENTS

Resident Gender



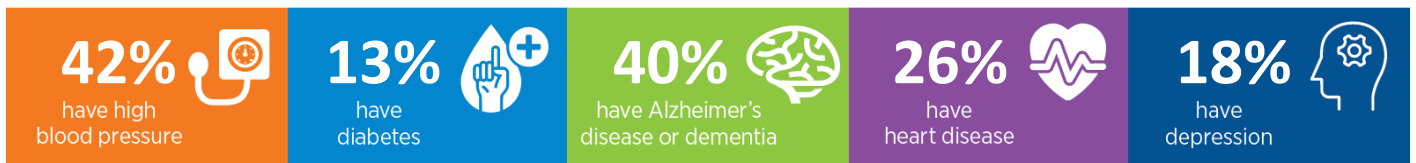
Resident Age



Activities of Daily Living



Common Conditions



ASSISTED LIVING PROVIDERS

7,513 assisted living communities
201,719 beds/units

2% of residents rely on **Medicaid** for their long term care in assisted living

ECONOMIC IMPACT

Workforce

50,077 direct jobs
72,263 total* jobs

Economic Activity

\$4.62 Billion direct
\$9.10 Billion total*

Tax Revenue

\$376.5 Million state/local
\$913.4 Million federal

*Total impact is the sum of direct, indirect, and induced effects on the economy of the state.

Sources: CDC/NCHS, National Post-acute and Long-Term Care Study (2020), State Licensure Website (Accessed May 2023) IMPLAN Economic Impact Data and Software (2021)